

**Just Hoods®**  
AWDis





**JH01F**  
WOMEN'S  
COLLEGE HOODIE

**XS 8 S 10 M 12 L 14 XL 16 2XL 18**

|               |              |               |                |                 |
|---------------|--------------|---------------|----------------|-----------------|
|               |              |               |                |                 |
| Arctic White  | Ash          | Heather Grey  | Charcoal       | Storm Grey      |
|               |              |               |                |                 |
| Jet Black     | Deep Black   | Baby Pink     | Dusty Pink     | Candyfloss Pink |
|               |              |               |                |                 |
| Hot Pink      | Purple       | Plum          | Burgundy       | Fire Red        |
|               |              |               |                |                 |
| Red Hot Chili | Orange Crush | Sun Yellow    | Nude           | Kelly Green     |
|               |              |               |                |                 |
| Bottle Green  | Jade         | Sky Blue      | Turquoise Surf | Hawaiian Blue   |
|               |              |               |                |                 |
| Sapphire Blue | Royal Blue   | Airforce Blue | Oxford Navy    | New French Navy |

**JH01J**  
KIDS HOODIE

**1/2 24" 3/4 26" 5/6 28" 7/8 30" 9/11 32" 12/13 34"**

|                 |               |              |               |                 |
|-----------------|---------------|--------------|---------------|-----------------|
|                 |               |              |               |                 |
| Arctic White    | Ash           | Heather Grey | Charcoal      | Storm Grey      |
|                 |               |              |               |                 |
| Jet Black       | Deep Black    | Baby Pink    | Dusty Pink    | Candyfloss Pink |
|                 |               |              |               |                 |
| Hot Pink        | Purple        | Plum         | Burgundy      | Fire Red        |
|                 |               |              |               |                 |
| Red Hot Chili   | Orange Crush  | Sun Yellow   | Lime Green    | Kelly Green     |
|                 |               |              |               |                 |
| Olive Green     | Bottle Green  | Forest Green | Jade          | Sky Blue        |
|                 |               |              |               |                 |
| Hawaiian Blue   | Sapphire Blue | Royal Blue   | Airforce Blue | Oxford Navy     |
|                 |               |              |               |                 |
| New French Navy |               |              |               |                 |



**CONTEMPORARY  
EVERYDAY  
STYLE**

**JH001**  
COLLEGE HOODIE

**XS 34" S 36" M 40" L 44" XL 48"**  
**2XL 52" 3XL 56" 4XL\* 60" 5XL\* 62"**

\*4XL–5XL only available in these colours.

|                |                 |                   |               |                |               |               |                |               |               |              |                  |
|----------------|-----------------|-------------------|---------------|----------------|---------------|---------------|----------------|---------------|---------------|--------------|------------------|
|                |                 |                   |               |                |               |               |                |               |               |              |                  |
| Arctic White*  | Ash             | Heather Grey*     | Moondust Grey | Steel Grey     | Shark Grey    | Charcoal*     | Storm Grey     | Black Smoke   | Jet Black*    | Deep Black*  | Baby Pink*       |
|                |                 |                   |               |                |               |               |                |               |               |              |                  |
| Dusty Pink     | Candyfloss Pink | Lipstick Pink     | Hot Pink      | Cranberry      | True Violet   | Lavender      | Pinky Purple   | Magenta Magic | Ultra Violet  | Purple*      | Wild Mulberry    |
|                |                 |                   |               |                |               |               |                |               |               |              |                  |
| Dusty Purple   | Plum            | Burgundy Smoke    | Burgundy*     | Fire Red*      | Brick Red     | Red Hot Chili | Sunset Orange  | Burnt Orange  | Orange Crush  | Mustard      | Gold             |
|                |                 |                   |               |                |               |               |                |               |               |              |                  |
| Sun Yellow     | Sherbet Lemon   | Vanilla Milkshake | Peach Perfect | Nude           | Desert Sand   | Mocha Brown   | Caramel Toffee | Hot Chocolate | Apple Green   | Lime Green   | Alien Green      |
|                |                 |                   |               |                |               |               |                |               |               |              |                  |
| Spring Green   | Kelly Green     | Moss Green        | Combat Green  | Olive Green    | Bottle Green* | Forest Green  | Peppermint     | Jade          | Deep Sea Blue | Sky Blue*    | Cornflower Blue  |
|                |                 |                   |               |                |               |               |                |               |               |              |                  |
| Turquoise Surf | Hawaiian Blue   | Dusty Blue        | Tropical Blue | Sapphire Blue* | Royal Blue*   | Airforce Blue | Denim Blue     | Ink Blue      | Navy Smoke    | Oxford Navy* | New French Navy* |

These products have the following accreditations:



Mustard



IT'S ALL IN THE COLOUR

JH030  
AWDis SWEATSHIRT

XS 34" S 36" M 40" L 44" XL 48" 2XL 52" 3XL\* 56" 4XL† 60" 5XL† 62"

\*3XL only available in these colours. †4XL–5XL only available in these colours.

Arctic White\*

Ash

Heather Grey\*

Moondust Grey

Steel Grey

Charcoal\*

Storm Grey

Black Smoke

Jet Black\*

Deep Black

Baby Pink\*

Dusty Pink

Candyfloss Pink

Hot Pink\*

Cranberry

Purple\*

Plum

Burgundy\*

Fire Red\*

Red Hot Chili

Burnt Orange

Orange Crush

Gold

Sun Yellow

Nude

Hot Chocolate

Lime Green

Kelly Green

Olive Green

Bottle Green

Forest Green

Jade

Sky Blue

Turquoise Surf

Hawaiian Blue

Sapphire Blue\*

Royal Blue\*

Airforce Blue

Oxford Navy

New French Navy\*

Baby Pink

JH050  
ZOODIE

S 36" M 40" L 44" XL 48" 2XL 52" 3XL\* 56" 4XL\* 60" 5XL\* 62"

\*3XL–5XL only available in these colours

Arctic White

Ash

Heather Grey\*

Steel Grey

Charcoal

Storm Grey

Black Smoke

Jet Black\*

Deep Black\*

Hot Pink

Purple

Fire Red

Burgundy

Red Hot Chili

Orange Crush

Mustard

Sun Yellow

Kelly Green

Bottle Green

Forest Green

Hawaiian Blue

Sapphire Blue

Royal Blue

Oxford Navy

New French Navy\*

Royal Blue

These products have the following accreditations:

PTA - APPROVED

VEGAN

Sedex

WRAP

WORLDWIDE RESPONSIBLE ACCREDITED PRODUCTION

Burgundy





Purple/  
Sun Yellow

Sky/Arctic  
White

# **VARSITY VIBES**

## **JH003** **VARSITY HOODIE**

XS\* 34" S 36" M 40" L 44" XL 48"  
2XL 52" 3XL† 56" 4XLΔ 60" 5XLΔ 62"

\*XS only available in these colours.  
†3XL only available in these colours.  
Δ4XL–5XL only available in these colours.

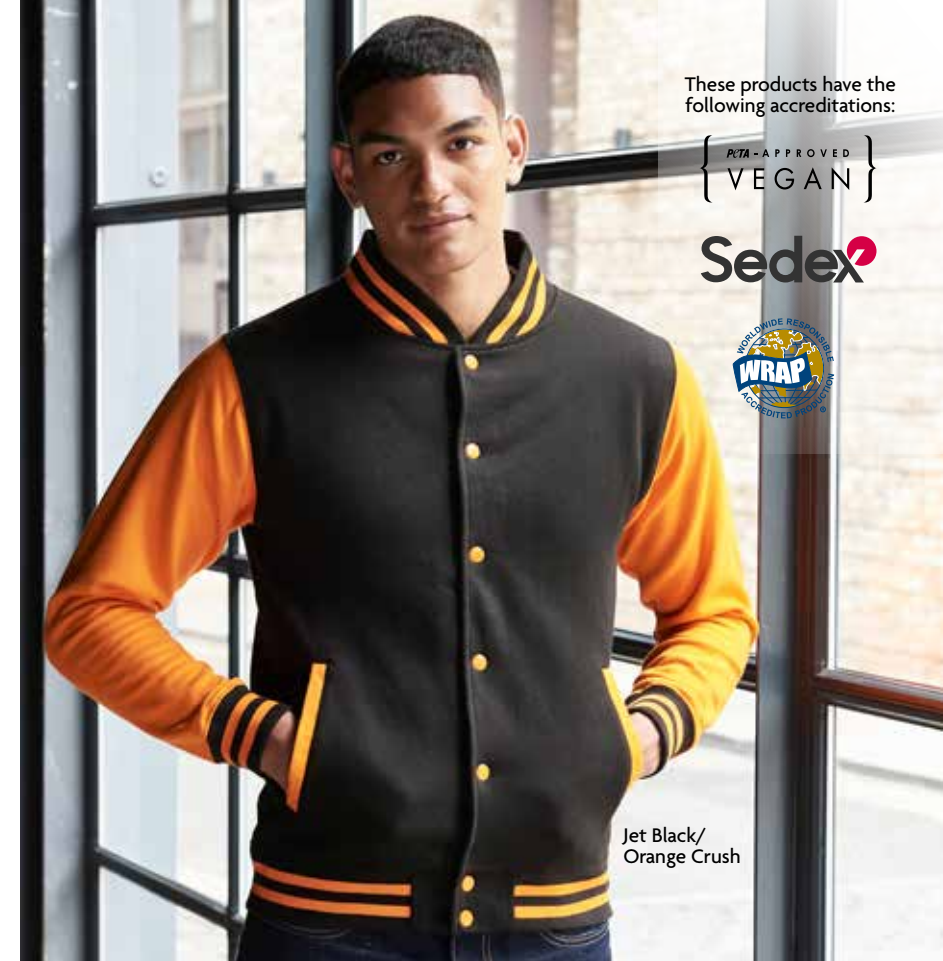
|  |  |  |  |  |  |  |  |
|--|--|--|--|--|--|--|--|
|  |  |  |  |  |  |  |  |
|  |  |  |  |  |  |  |  |
|  |  |  |  |  |  |  |  |
|  |  |  |  |  |  |  |  |
|  |  |  |  |  |  |  |  |
|  |  |  |  |  |  |  |  |

## **JH043** **VARSITY JACKET**

XS 32" S 34" M 38" L 42" XL 46"  
2XL 50" 3XL\* 54"

\*3XL only available in these colours.

|  |  |  |  |
|--|--|--|--|
|  |  |  |  |
|  |  |  |  |
|  |  |  |  |
|  |  |  |  |
|  |  |  |  |



These products have the following accreditations:

PETA - APPROVED  
 VEGAN

Sedex<sup>2</sup>



Jet Black/  
Orange Crush



Heather Grey/  
Jet Black

## **JH009** **BASEBALL HOODIE**

S 36" M 40" L 44" XL 48" 2XL 52"

|  |  |  |  |
|--|--|--|--|
|  |  |  |  |
|  |  |  |  |
|  |  |  |  |
|  |  |  |  |





## JH230 ORGANIC SWEATSHIRT

**XS** 34" **S** 36" **M** 40" **L** 44" **XL** 48"  
**2XL** 52"



# GO ORGANIC

These products have the following accreditations:



## JH201 ORGANIC HOODIE

**XS** 34" **S** 36" **M** 40" **L** 44" **XL** 48"  
**2XL** 52" **3XL** 56"



# Just Hoods®

## AWDis

have the following accreditations:



The 'PETA – Approved Vegan' logo allows companies that sell apparel, accessories, furniture or home decor to highlight their vegan offerings, helping consumers find animal-free products at a glance and make purchases that align with their values.



Sedex is a global membership organisation dedicated to driving improvements in ethical and responsible business practices in global supply chains. Sedex provides a range of tools, services, guidance and training to help companies map and manage risks in their supply chain.



WRAP is an independent, objective, non-profit team of global social compliance experts dedicated to promoting safe, lawful, humane and ethical manufacturing around the world through certification and education.